



**Terle Bank, Wootton, Bedford, MK43 9QJ**  
**£370,000 Freehold**



Introducing this stunning three double bedroom semi-detached townhouse, ideally situated in a quiet location in Wootton. Beautifully presented throughout, this property is offered for sale with a complete chain has spacious living accommodation aver three floors. Downstairs, there is a welcoming entrance hall with a storage cupboard and WC, a modern kitchen/breakfast room with integrated appliances, and a spacious lounge/dining room leading out to the garden. On the first floor, there are two double bedrooms and a stylish family bathroom. The second floor boasts a superb master bedroom with built-in wardrobes and an en suite shower room. Outside, the property benefits from a good-sized rear garden, front gardens, a garage, and a driveway providing parking for two cars. Further benefits include approximately three years remaining on the building warranty, close proximity to local amenities, and over 1,150 sq ft of accommodation. Contact us today to arrange your viewing.

Entrance Hall

WC

Kitchen/Breakfast room

11'5 x 9'11 (3.48m x 3.02m)

Lounge/Dining room

15'9 x 12'2 (4.80m x 3.71m)

Stairs to First Floor

First Floor Landing

Bedroom 2

15'9 x 11'6 (4.80m x 3.51m)

Bedroom 3

9'7 x 8'5 (2.92m x 2.57m)

Bathroom

Stairs to Second Floor

Bedroom 1

17'3 x 15'7 (5.26m x 4.75m)

Ensuite

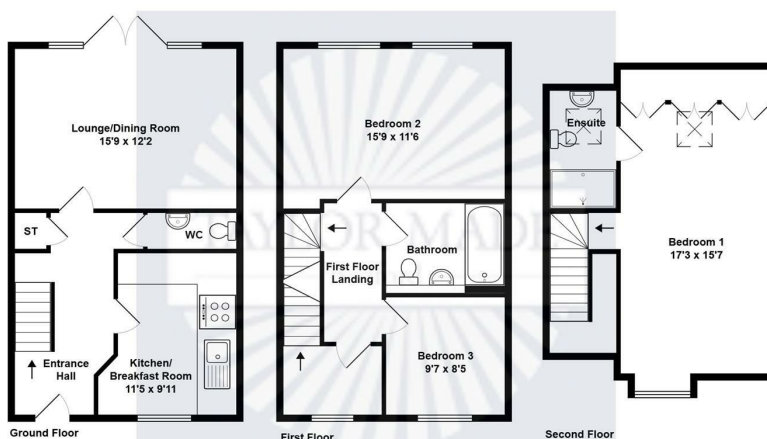
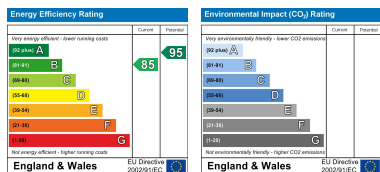
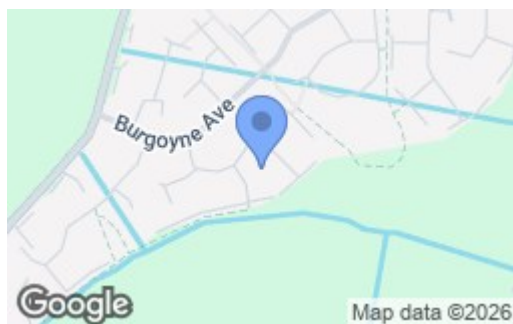
Front & Rear Garden

Garage & Driveway

Wootton

Wootton village is home to a variety of amenities including a selection of pubs/restaurants, shops and a garage. This sought after village is extremely popular and has an abundance of woodland to explore, you will also find a number of period properties along with the renowned Wootton Manor. Wootton is approximately 5 miles from Bedford Town Centre and Train Station which offers links into London St Pancras in under 40 minutes, there is also great access to the A421, A428 and the A6 roads.

Council Tax: Bedford Borough D



Terle Bank, Wootton, MK43 9QJ  
 Total Area: 109 SqM = 1173.3 SqFt (approx)  
 Please note this floorplan and all furniture shown is for illustration purposes only. It is not drawn to scale and any measurements, floor areas, openings and orientations are approximates. No liability is taken for any error, omission or misstatements. A party must rely on their own inspection(s).  
 Plan produced by Taylor Made Bedford.  
 Powered by ZPlan.

These particulars of sale are a general outline, acting as guidance only. All descriptions, dimensions and references to condition are given without responsibility falling upon the vendors or their agents. Taylor Made Residential has not tested any apparatus, equipment, fixtures or services. We have not sought to verify the legal title of the property, purchasers must obtain verification from their solicitor. This is offered for sale on a Subject to Contract and Without Prejudice basis 2026.



Taylor Made Residential Limited  
Taylor House, Roman Gate, Saxon Way, Great Denham, Bedford, MK40 4FU



01234 302043



bedford@taylormadepropertyes.co.uk  
www.taylorlandandpropertygroup.co.uk

Company Registration: 10726223 VAT Number: 268 8165 58

